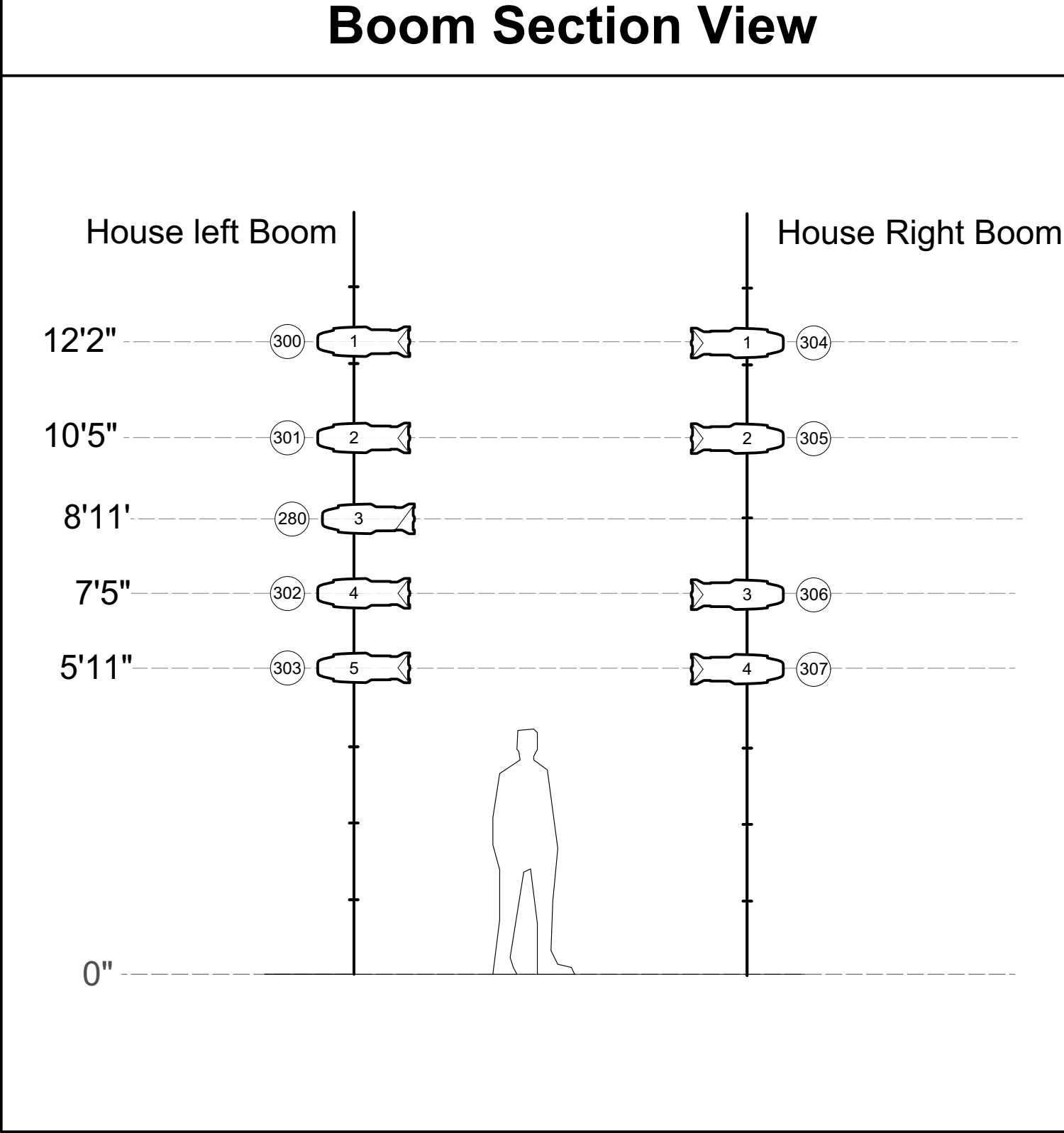
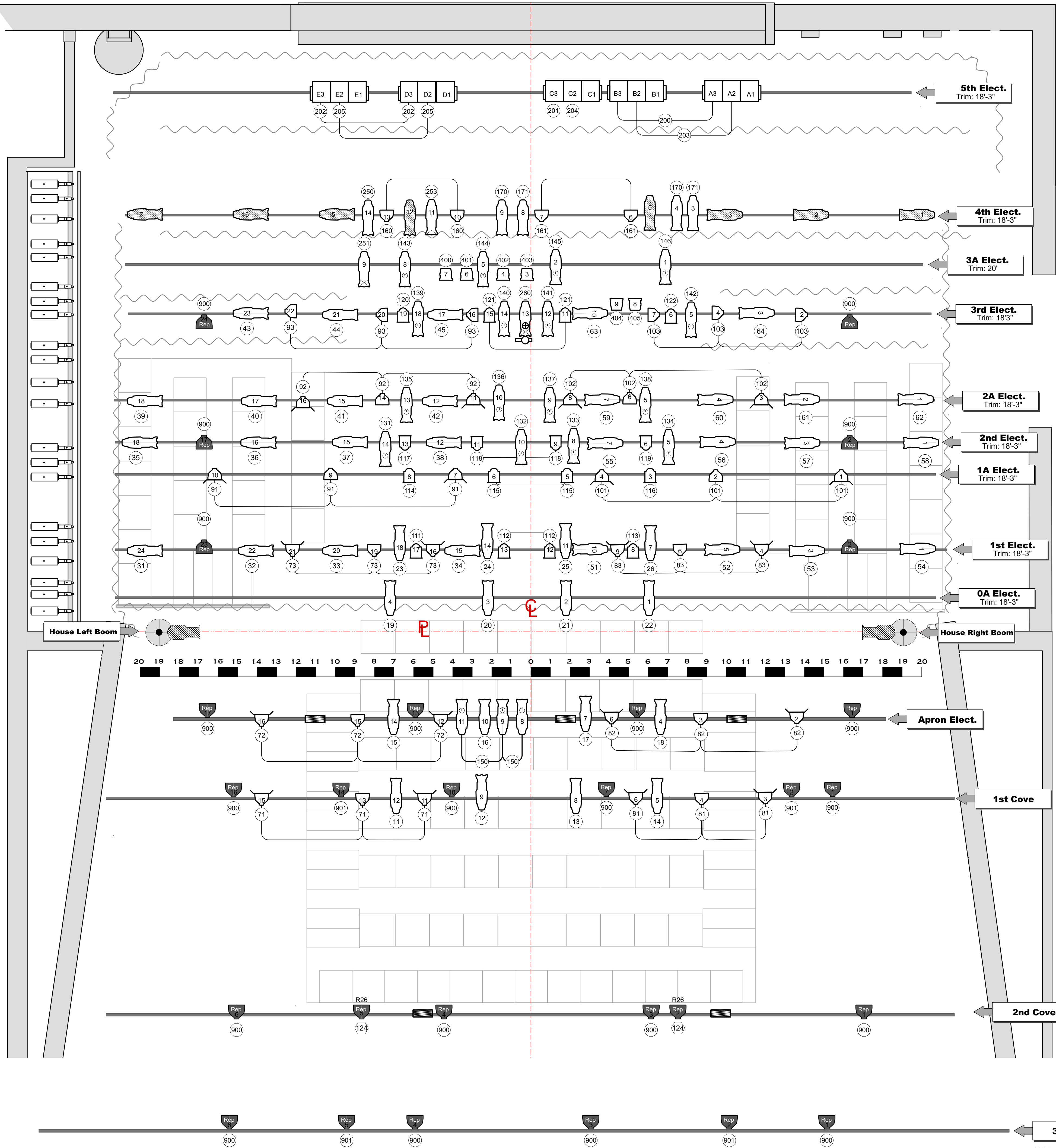


| |
|--------------------------------|
| DH. Border |
| 21. 5th Electric. Trim: 18' 3" |
| 20. BORDER/BLACKOUT |
| 19. 4TH ELEC. Trim: 18' 3" |
| 18. Border |
| 17. 3A ELEC. Trim: 20' |
| 16. |
| 15. LEGS |
| 14. 3RD ELEC. Trim: 18' 3" |
| 13. LEGS |
| 12. |
| 11. (split batten) |
| 10. 2A ELEC. Trim: 18' 3" |
| 9. 2ND ELEC. Trim: 18' 3" |
| 8. |
| 7. 1A Elec. Trim: 18'3" |
| 6. |
| 5. |
| 4. 1ST ELEC. Trim: 18' 3" |
| 3. |
| 2. 0A ELEC. Trim: 18' 3" |
| 1. Border |

All scenic trim heights from show deck to bottom of piece.
All electric trim heights from show deck to bottom of batten.



Instrument Key

- Sourc 4 Par (Wide Flood)
- Sourc 4 Par House light
- 6" Fresnel
- ETC Source 4 36° @ 575w
- ETC Source 4 36° 750w
- ETC Source 4 26° @ 575w
- ETC Source 4 19° @ 575w
- ETC Source 4 50° @575w
- ETC Source 4 36° 575W(spare)
- LED Par
- Colortran 3-Cell Cyc
- Halogen Work Light

Accessories

- Barn Door
- Template Holder
- 15" Side Arm
- Moving Mirror
- DMX Iris

Typical Instrument

Notes

- All Pig Tails to be tied at C-Clamp
- Fresnels to be opened to 1/2 flood before focus
- Extra cuts of R119 to be available for focus
- LED need to be Roostered out 90 degrees
- Have extra circuit available on deck for potential practicals
- Do Not circuit spare fixtures 4th electric
- Do not circuit first cell on Cyc Cells

ILLINOIS STATE UNIVERSITY

The Walls/ Coffee Bar

Director
Janet Wilson/ Bruce Burningham

Lighting Designer
James Morrison

Master Electrician
Erica Maholmes

Assist. Lighting Designer
Halley Paluch

Over Head Light Plot

Revised: 3/30/2017

Plate 1 of 2

Scale: 3/8" = 1'

Drawn By:
James Morrison
Phone:(571)224-2821
Email: jmorri5@ilstu.edu

*Distance to PL not to scale